



FOR A SAFER STATE

Bushfire mapping in WA Changes, updates and future

Department of Fire and Emergency Services
Office of Bushfire Risk Management

Richard Trinh – Program Manager



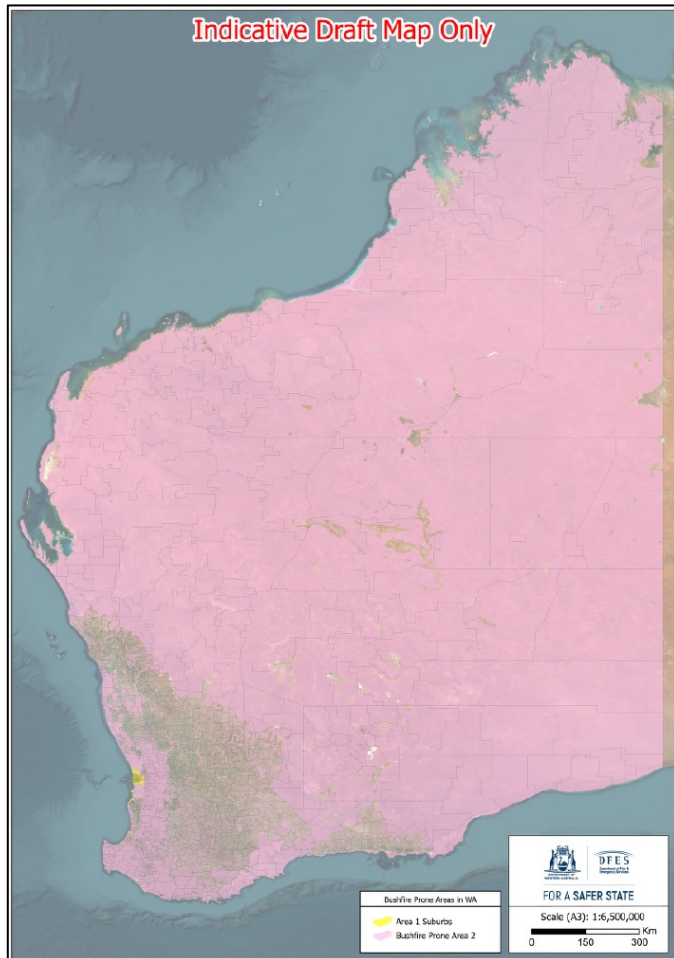
Overview

Program Manager, Office of Bushfire Risk Management

Acting Director, Land Use Planning

Map of Bushfire Prone Areas

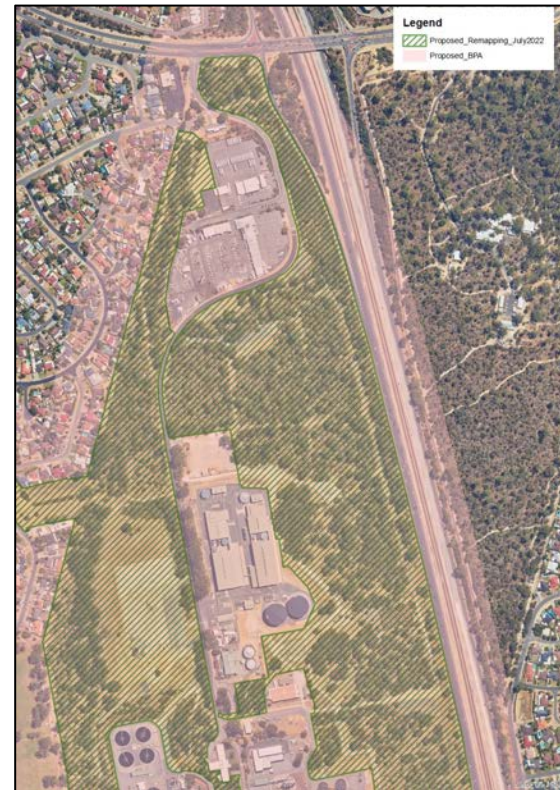
- **History**
- **Update – Challenges**
- **Future direction**



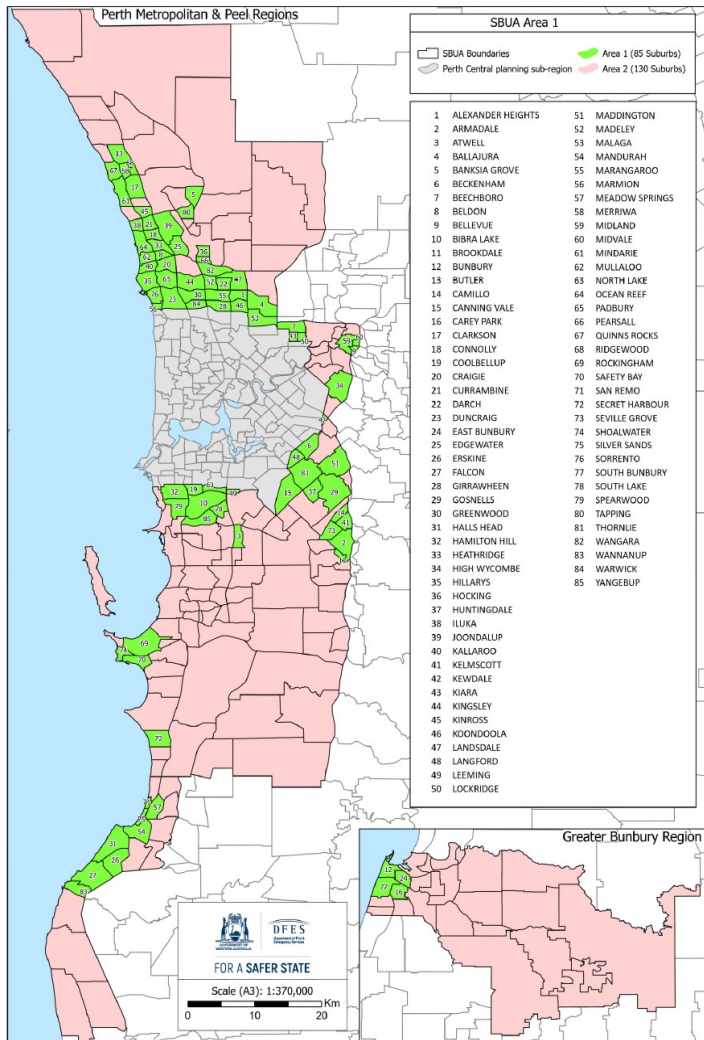
Map of Bush Fire Prone Areas

- An area that is likely to be subject to bush fire attack.
- Designated as bushfire prone by the Fire and Emergency Services Commissioner under Section 18P of the *Fire and Emergency Services Act 1998*.

Map History



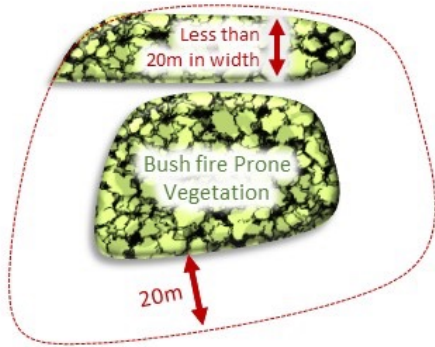
2024 Map Update



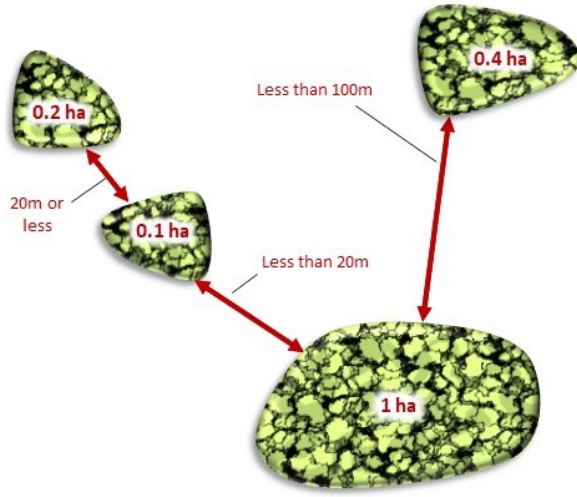
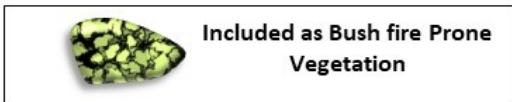
- Swan Coastal Plain
 - Reviewed 182,000 ha vegetation
 - Lower landscape scale bushfire risk
- Introduced opportunity for nuanced planning and building response
- Area 1 – 85 suburbs + Inner 19 LG
- Area 2 – Rest of state

Mapping Standard for Bush Fire Prone Areas

(a) Group of vegetation plots with combined between 0.25 and 0.99 ha distanced less than 100m from BPV plots



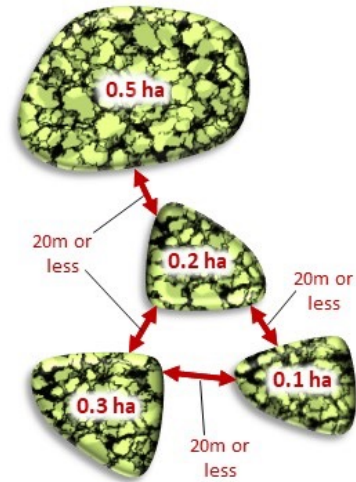
(a) Strip of vegetation less than 20m wide and within 20m from other BPV



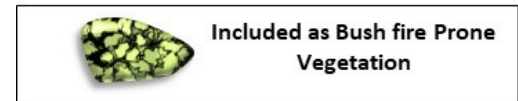
(c) Isolated vegetation plot with area ≥ 1 ha



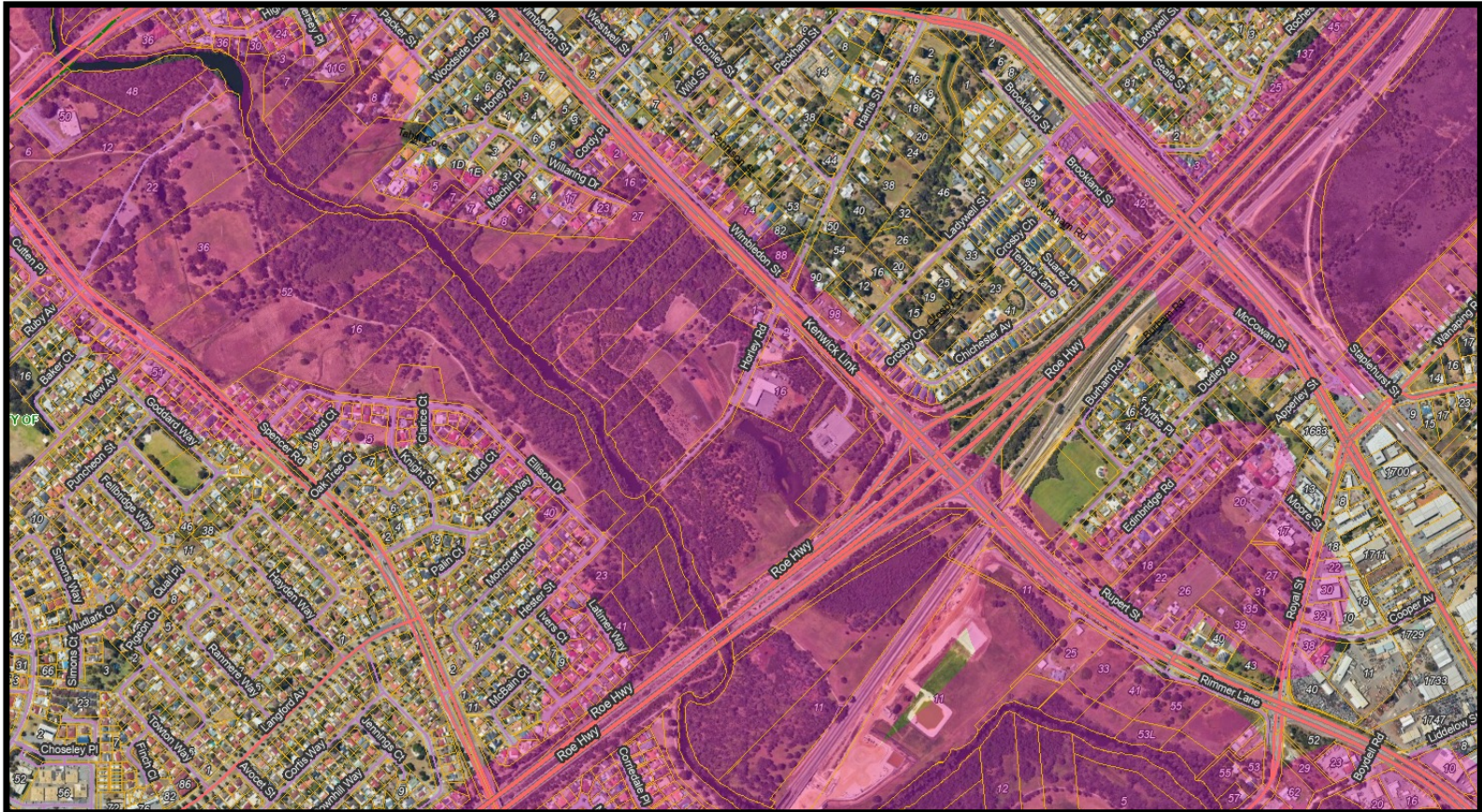
(b) Isolated vegetation plot with area ≥ 0.25 distanced less than 100m from BPV plots



(a) Group of vegetation plots with combined area ≥ 1 ha



Challenges – Lessons Learnt



Future Direction

- Continue working with:
 - Department of Planning, Lands and Heritage (DPLH)
 - Department of Energy, Mines, Industry Regulation and Safety (DEMIRS)
- Rolling out Area 1 to regional areas
- More frequent Map updates
- Alignment with AS3959
- Assisting non-GIS enabled Local Government
- AI, remote sensing and machine learning

